

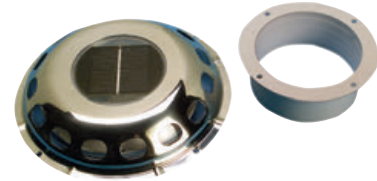
DELUXE stainless steel cowl vent**AISI 316**

Made of mirror polished AISI 316 stainless steel, fitted with screw locking cap.

Code	Deck hole mm	Height mm
53.134.09	102	136

**Ventilator**Made of **stainless steel**, lets air pass through without letting water in, fitted with underlying electric starter for cabin ventilation, powered with solar cell built-in onto the ventilator.

Code	Ø mm	Overhang mm	Housing hole mm
53.503.00	200	30	103

**Watertight vents - ventilite/ventair**Made of **stainless steel**. It lets air in while being completely watertight.

Code	Model	External Ø mm	Height mm	Housing hole mm
53.500.10	With light passage	230	35	97

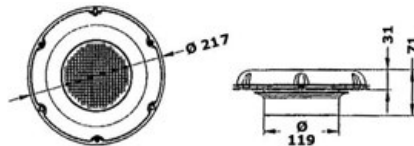
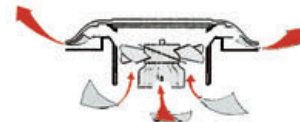
**LEWMAR ventilator**

Made of reinforced plastic, it exchanges air and prevents water seepage. It can be mounted onto the hatch glass or on the deck. Universal model complying with the CE ISO 12216:2003 standards.

Code	External Ø mm	Recess bore mm
19.041.01	170	76

**LEWMAR®****Solarvent automatic solar vent**Represents the most advanced ventilation system, powered by solar energy. Dome in **mirror-polished stainless steel**. ON-OFF switch. The ventilator is equipped with rechargeable NiMH batteries that, by storing energy during the day, ensure a **10-hour operation even without sunlight**. Complete with two DX/SX fans that allow choosing whether to **let in** or **let out** the air.

Code	Cap Ø mm	Practice hole mm	External/internal overhang mm	Air circulation m³/h
53.636.00	217	119	71 total	20

**OSCULATI****Shell Vent**Made of **chromed brass**, innovative and elegant design.

Code	←→ mm	Type
53.310.01	165x120x34	American
53.313.00	175x115x40	-

