

## BOMAR Flagship opening portlight

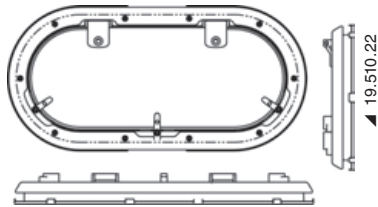


Housing in **nylon** with outer finishing ring and mosquito net. Adjustable stops.  
Smoked acrylic glass.  
Fixing with **invisible** screws. Wall thickness 6-35 mm.  
CE certified.

Code	Shape	Outside mm	Cut size mm	Colour	Code Bomar
19.510.21	Oval	141x357	116x332	white	614
19.510.22	Oval	216x444	191x419	white	620
19.511.21	elliptical	160x425	135x400	white	615
19.511.22	elliptical	209x468	184x443	white	618
19.511.24	elliptical	418x200	395x174	white	619



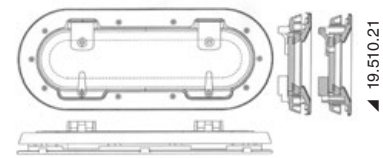
19.510.21



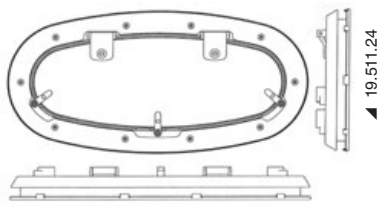
19.510.22



19.510.22



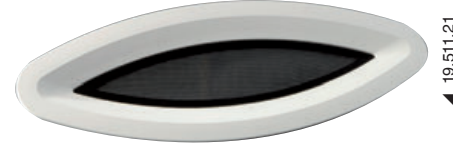
19.510.21



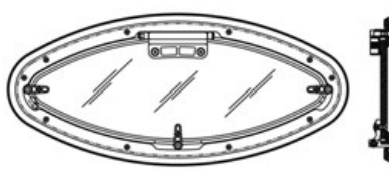
19.511.24



19.511.24



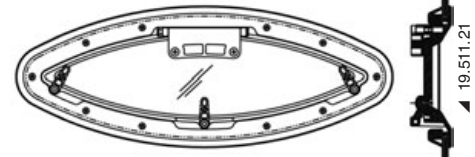
19.511.21



19.511.22



19.511.22



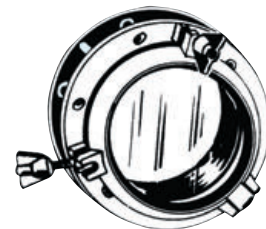
19.511.21

## Plastic portlights

## Circolare opening portlight

Made of nylon, elegant and functional shape, fitted with plexiglas lens.

Code	Colour	Closure	Clear opening Ø mm	External dimension mm	Cut size mm	Useful neck mm
19.750.01BI	<input type="checkbox"/> white	Wing nut	135	220	165	6/35
19.750.01NE	<input checked="" type="checkbox"/> Black	Wing nut	135	220	165	6/35
19.750.02BI	<input type="checkbox"/> white	Wing nut	185	270	215	6/35
19.750.02NE	<input checked="" type="checkbox"/> Black	Wing nut	185	270	215	6/35
19.750.03BI	<input type="checkbox"/> white	Wing nut	235	320	265	6/35
19.750.03NE	<input checked="" type="checkbox"/> Black	Wing nut	235	320	265	6/35



## Nylon rectangular portlight

100% stainless, fitted with **nylon trimming ring**. Built-in water drainer.

Code	Colour	Glass in	Version	Net light mm	External dimension mm	Cut size mm	Useful neck mm
19.696.00BI	<input type="checkbox"/> white	Plexiglass	Opening	320x120	400x200	345x155	6/35

