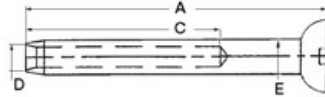


Press-fitting cable terminals with ball head, made of AISI 316 stainless steel



Code	For cables mm	Ø Head mm	A mm	C mm	D mm	E mm
05.200.04	4	16	69	45	4.4	7.5
05.200.05	5	19	79	51	5.3	9
05.200.06	6	20	90	64	6.5	12.58
05.200.07	7	21.3	94	70	7.5	14.2
05.200.08	8	26.3	116	83	8.4	16

Terminal slots made of stainless steel



Code	For cables mm	A mm	B mm
05.201.04	3/4	9	26
05.201.05	5	11.2	26
05.201.07	6/7	16	26
05.201.12	8/10	20	34

Lifeline accessories, thimbles



AISI316 stainless steel base plate

For deck mounting of stainless steel cast lifelines. Extra sturdy.

Code	Eye mm	←→ mm
05.860.87	10	62x38

Stainless steel thimbles

To prevent eye splicings from chafing on ropes or stainless steel cables.



▲ 05.326.xx



▲ 05.327.xx

Stainless steel, mirror polished (standard)	Weight g	Stainless steel, mirror-polished (heavy)	Weight g	←→ mm	ORDER BY BOX
05.326.02	-	-	-	2	10
05.326.25	-	-	-	2.5	10
05.326.03	-	-	-	3	10
05.326.04	-	-	-	4	10
05.326.05	-	-	-	5	10
05.326.06	-	-	-	6	10
05.326.08	-	-	-	8	10
05.326.10	-	-	-	10	10
05.326.12	-	-	-	12	10
05.326.14	-	-	-	14	10
05.326.16	60	05.327.16	125	16	-
05.326.18	78	05.327.18	156	18	-
05.326.2	110	05.327.20	266	20	-
05.326.22	184	05.327.22	326	22	-
05.326.24	224	05.327.24	505	24	-
-	-	05.327.28	590	28	-
-	-	05.327.30	930	30/32	-
-	-	05.327.34	1320	34/38	-
-	-	05.327.40	2085	40	-

Nylon thimble

Made of **white nylon**. To prevent eye splicings from chafing on fabric or stainless steel cables.



Code	←→ mm	ORDER BY BOX
05.328.05	5	20
05.328.06	6	10
05.328.08	8	10
05.328.10	10	10
05.328.12	12	20
05.328.14	14	10
05.328.15	15/16	10
05.328.18	18	10
05.328.20	20	10
05.328.22	22	10
05.328.24	24	10

Ut Douglas Marine



bik® thimble made of elastomer

PATENT

Made of special black elastomer. For elastic mooring, they avoid the mooring line to undergo stresses.

Code	For line Ø mm	Elastic load kg	Colour
05.380.12	12-14	160	black
05.380.16	16-18	250	black
05.380.20	20-22	500	black