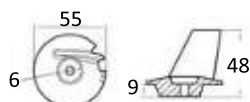
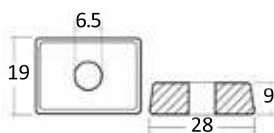
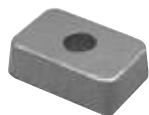


Anodi per motori TOHATSU - NISSAN



Pinna serie 140 per Tohatsu

Zinco	Alluminio	Rif. Originale
43.640.10	43.640.11	3V1602170 8/20 HP - 4 tempi



Piastrina per Tohatsu

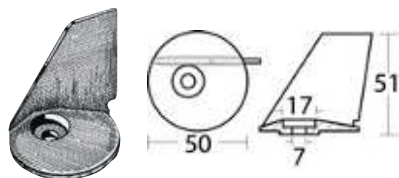
Zinco	Alluminio	Rif. Originale
43.640.20	43.640.21	3H660218000 4/6 HP - 2/4 tempi



Rondella per Tohatsu

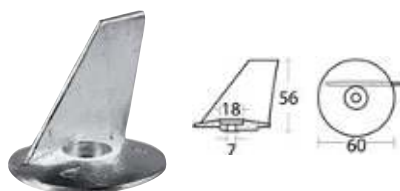
Zinco	Alluminio	Magnesio	Ø mm	Rif. Originale
43.239.13	43.239.14	43.239.15	24x7	369-60218-1
43.823.91	43.823.92	-	20x7	338-60218-2

Pinna per 35/40 HP



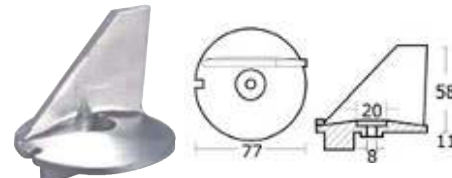
Codice	Ø mm	Riferimento originale
43.640.01	50	338-60217-0

Pinna per 25/30 HP e 40/50 HP Mega



Codice	Ø mm	Riferimento originale
43.640.02	59,5	3C8-60217-1

Pinna 60/70/140 HP



Codice	Ø mm	Riferimento originale
43.640.03	77	3B7-60217-0

Barra, 40/60/140 HP



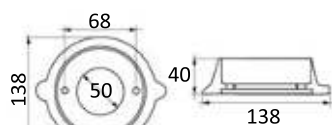
Zinco	Alluminio	Magnesio
43.640.04	43.640.14	43.640.17

Zinchetto 9,9/15/18 HP



Codice	Riferimento originale
43.640.05	3B7-60218-1

Anodi per motori BUKH



Collare piede BUKH

Per Saildrive DV10, DV20, DV36, DV48.

Codice	Interasse fori mm	Ø esterno mm	Altezza mm	Larghezza mm	Ø interno mm	Riferimento originale
43.760.01	67	105	40	140	50	BOOE5829